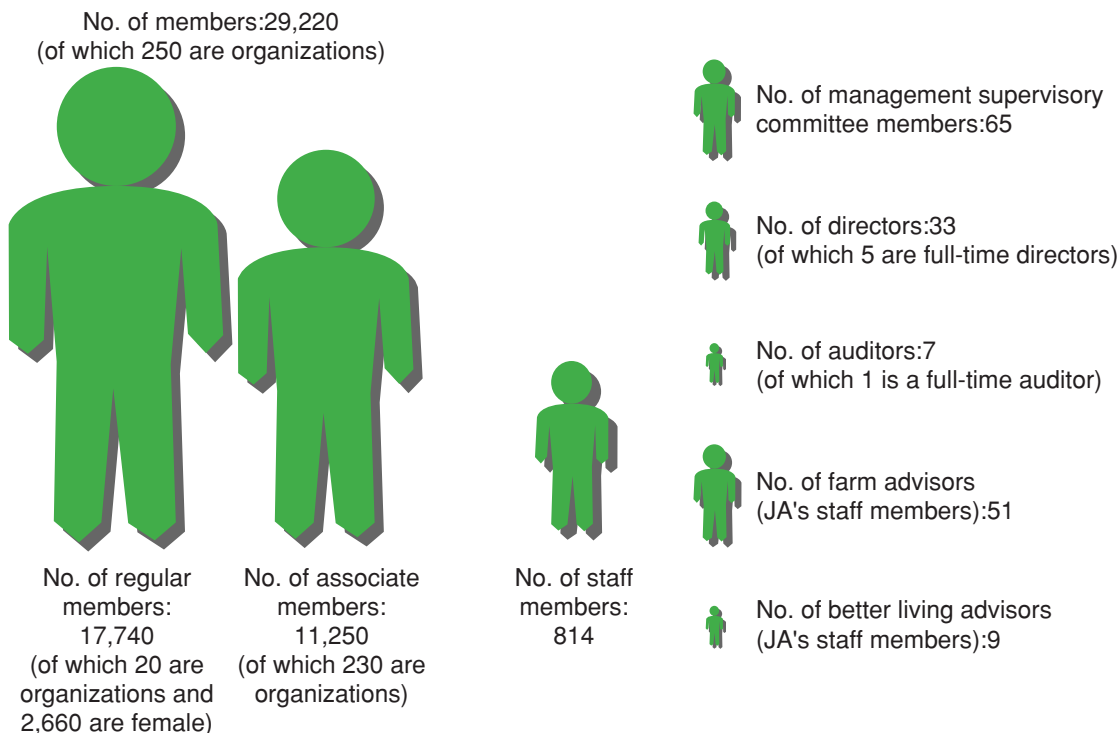


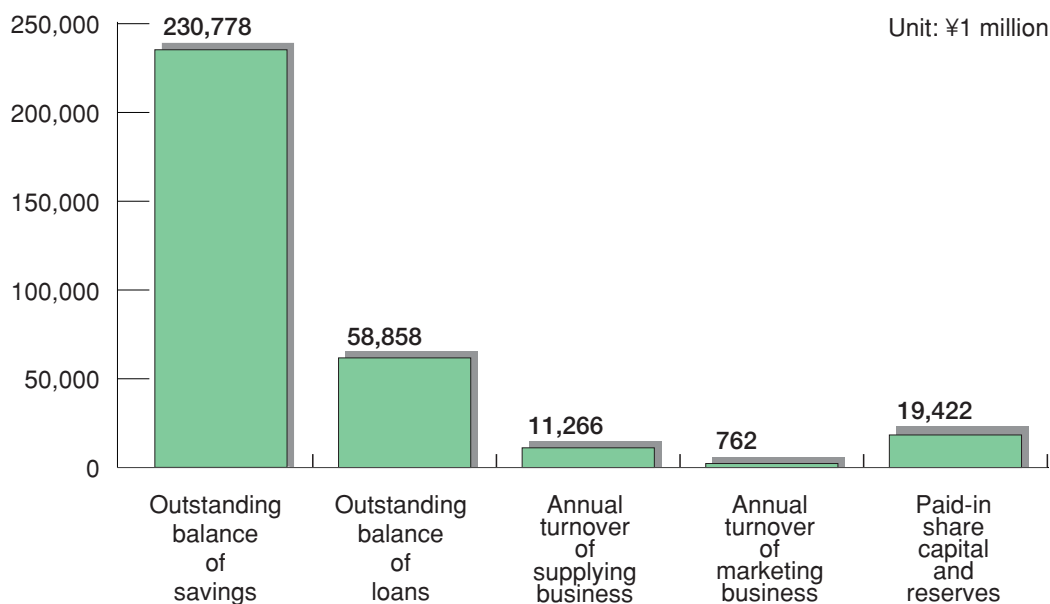
Average Figures of Merged JAs (2002)

(Average figures of merged JAs with the membership of more than 10,000 regular member families)

Average Organizational Size of Merged JAs



Average Business Turnover of Merged JAs (FY 2002)



Source: "Statistics on Multipurpose Agricultural Cooperatives" (FY2002), Ministry of Agriculture, Forestry and Fisheries (MAFF)

Note: "Paid-in share capital and reserves" include revolving share capital, legal reserves, capital reserve and special reserves.